

Since 1980

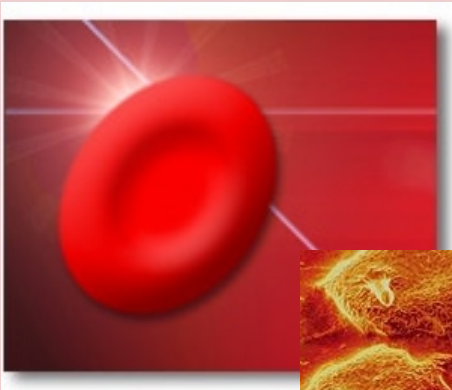
## DEEPEE PRODUCT GUIDE

### Mobile Blood Bank Refrigerator



Take the decisive lead with....

- \* Information.
- \* Planning.
- \* Processing.
- \* Set-up.
- \* Service.



# DEEPEE MOBILE REFRIGERATION SYSTEMS TO MAINTAIN COLD CHAIN

**DEEPEE** has uniquely introduced a new exclusive range of Mobile Medical Refrigeration Equipments for safe transportation of temperature sensitive biologicals, Vaccines blood and its components. Additionally **DEEPEE** manufactures an exclusive range of Medical Refrigeration Equipments up to -120 C. Since **1980 DEEPEE** is involved in the field of Refrigeration Equipments.

The portable **DEEPEE** Mobile Medical Refrigeration Equipments are operated by D.C. current and it can be easily installed in ambulance, car, Mobile Refrigeration Van etc. And available in different capacities. Its high strength cabinet construction, high quality CFC-Free polyurethane insulation and digital temperature controller cum indicator ensures the high quality product which offers outstanding performance and temperature accuracy.

## Technical Details:

**Construction:** Interior body from stainless steel (SS-304) and exterior CRC powder coated body with locking system for unauthorized access and handling hook facility.

**Insulation:** Foamed in place **CFC-Free** polyurethane insulation to maintain effective temperature inside the cabinet.

**Temperature Controller:** Electronic digital temperature controller cum indicator resolution to 0.1 C.

**Condensing Unit:** Hermetic air cooled **CFC-Free**, battery operated condensing unit with specially designed Mobile Compressor.

**Cooling Unit:** Skin type evaporator to maintain the effective temperature maintenance.

**Data Logger:** Data logger with data cable and software for data transmission and record.(Optional)



DMR-85



Blood Bank Refrigerator  
+2 C. To +6 C.

Plasma Freezer - 30C.

Installed in Mobile Van of Jankalyan Blood Bank Pune.

## Mobile Blood Bank Refrigerator: (+2 C. To +6)

Model No.	Capacity Bags* / Liters	Power Supply	Ext. Dimensions W x D x H
DMR - 85	60 / 85	12 / 24 V DC	28" x 19" x 26".
DMR - 125	100 / 125	230 V AC.#	44" x 24" x 22".

\*Capacity is based on primary whole blood bag volume of 450 ml.

**Refrigerant: 134a** Ambient Temperature: 32 C.

# Machine can be operated by 12 / 24 V battery with converter of 12 / 24 V DC in to 230 V AC.



## Mobile Deep Freezer (- 10 C. To - 30 C.)

Model No.	Capacity Liters	Power Supply	Ext. Dimensions W x D x H
DMF- 55	55	230 V AC.*	30" x 24" x 22".

**Refrigerant: R-404a** Ambient Temperature: 32 C.

\* Machine can be operated by 12 / 24 V battery with converter of 12 / 24 V DC in to 230 V AC.



## Deepee Cooling Products Pvt. Ltd.

6230, G.I.D.C. Estate, Road No.62, Sachin, Surat-394 230. Gujarat (INDIA)

Tele: 91-261-3240528. Mobile: +91- 9898021535. Website: www.deepeecooling.com

E-mail: deepee6230@yahoo.com, info@deepeecooling.com

Note: All the specifications and performance data in this catalogue are subject to change without prior notice.